



## MOBILE HOME **EVELIN 2**

10 x 3,5 m | 35 m<sup>2</sup>

- All-year-round, delivered complete
- For 6 people - 2 bedrooms, living room with pullout couch, kitchenette, bathroom, mezzanine with additional sleeping space/storage (option)
- Also available in simplified, summer version
- Equipped turnkey
- Solid reinforced steel construction
- Facade boards - Scandinavian spruce or other materials (option)
- Internal walls finished with modern materials or wood (option)
- Placed at its destination on wheels by means of an integrated chassis or by crane
- Optional: terrace, pergola, awning

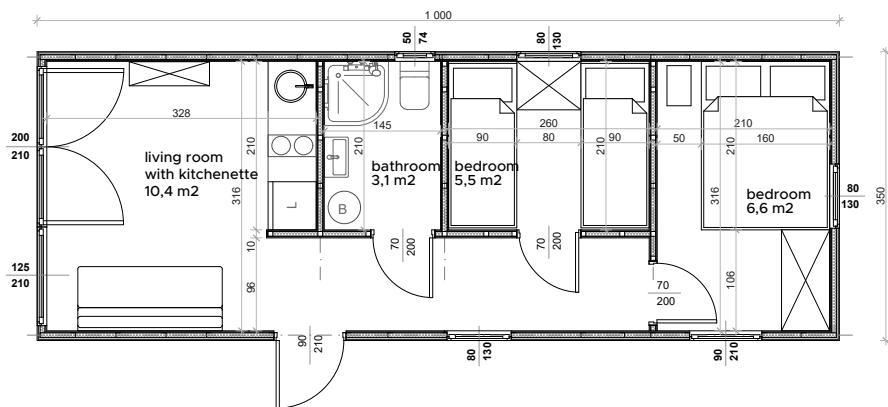
Sample interior layout  
Mirror layout or individual project available



*The EVELIN series is a solution for both individual clients and campsites, holiday resorts and investors who profit from renting.*

*It is a convenient alternative to houses built using the traditional method, timber framed houses. The house is delivered to the destination complete and usually set practically on the ground, without foundations. Equipped with removable wheels, it can be positioned almost anywhere. After placing it in its final place, it is possible to effectively mask the mobility function and integrate it aesthetically*

*Meveline homes are characterized by their stylish design and practicality. In the careful construction process, modern building and finishing materials or wood are used. The houses are available in sizes from 35 m<sup>2</sup> to 48 m<sup>2</sup>. Customers can choose the facade, interior trim and many additional elements.*



# MOBILE HOME **EVELIN 2**

## STANDARD

**External dimensions:** 10x3,5 m

**Construction:** steel construction with wooden elements, two axles of non-steer wheels

**Exterior wall:** multi-layer: interior finish MDF panels or wood (option), OSB board, steel profile, PUR foam insulation, vapor-permeable membrane, ventilated air gap, auxiliary grate, external facade Scandinavian spruce or other materials (option)

**Roof:** gable with a given angle of inclination, with the structure: ceiling finish, OSB board, wooden or steel roof truss, PUR insulation, vapor-permeable membrane, ventilated air gap, auxiliary grate, steel roof, steel sheet flashings, visible steel gutters and downspouts

**Ceiling:** open to the roof, finished with MDF panels or wood (option)

**Floor:** coated steel sheets, steel profile, PUR foam insulation, OSB board, laminated panels AC4 or three-layer board (option) or LVT (option)

**Interior walls:** OSB boards, steel or wooden profiles, acoustic insulation-mineral wool finished with vinyl panels/ MDF panels or wood (option)

**Windows:** PVC, 5 chambers with one-sided veneer in color,

**Doors:** outer -steel or PCV (option), insulated; internal -MDF white

**Electrical installation:** distribution box, wires in a conduit - 3x2,5 mm and 3x1,5 mm, sockets, contacts, external socket,

**Water and sewage installation:** PEX- -AL.-PEX pipes, electrically heated (in the all-season version), sewerage from PVC

**Lightning:** ceiling LED inside, sconce outside

**Heating:** installation ready for electric-oil heaters or infrared heating panels (option)

**Bathroom:** prepared for the package 1 installation

**Kitchen:** prepared for the assembly of standard fittings and additional, as well as furniture

**Living room, bedroom:** fully prepared for furniture and fixing of radiators; walls and floors finished, internal doors mounted.

## ADDITIONAL PACKAGES

### Package I - Turnkey bathroom

Bathroom - standard of finishing: walls and ceiling made of vinyl panels VOX or KerraDeco VOX (option), semicircular corner shower cabin, shower column, WC compact unit or suspended toilet (option), washbasin with cabinet, hanging cabinet with mirror, towel dryer, electric fan, heater 50l

**Package II - Turnkey kitchen, standard furniture, electric heaters.**

Kitchen: Walls – lower and upper cabinets, countertop, under-counter fridge, absorber, 2 burner electric cook top, one-compartment sink

Living room: fold out sleeper sofa, table, wardrobe or shelves

**Examples of additional:** mezzanine, interior finishing with wood, bathroom finishing with KerraDeco VOX panels, heating with infrared panels or floor heating, air conditioning,, facade of Kerrafront panels, awning, modular terrace, roofed pergola,

### Option:

- There is a possibility of mirror or individual layout