



## MOBILE HOME **VELI 7**

12 x 4 m | 48 m<sup>2</sup>

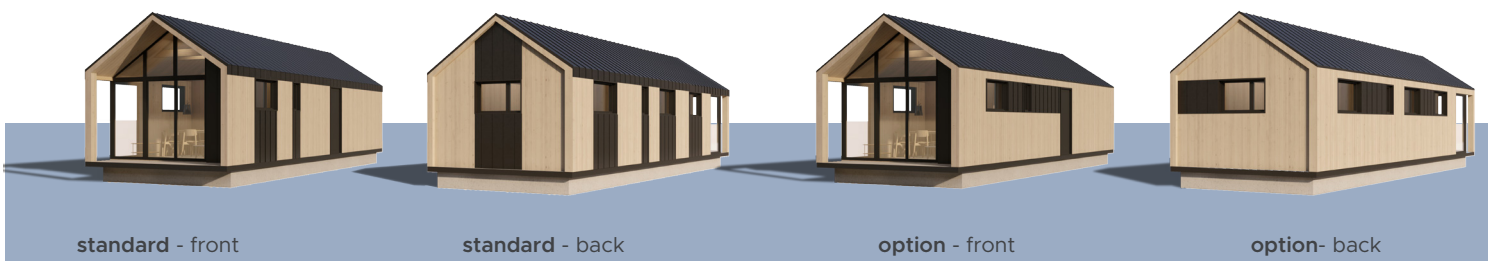
- All-year-round, delivered complete
- Ready to live immediately after delivery
- Also available in simplified, summer version
- For 6 people – 2 bedrooms, living room with pullout couch, kitchenette and bathroom
- Solid reinforced steel construction
- Complete plumbing and electrical installation
- Facade from Scandinavian spruce or other materials
- Internal walls finished with modern materials or wood \*
- Turn key packages \*
- Compact terrace and pergola

\* Optional equipment

Sample interior layout  
\* mirror layout or individual project available



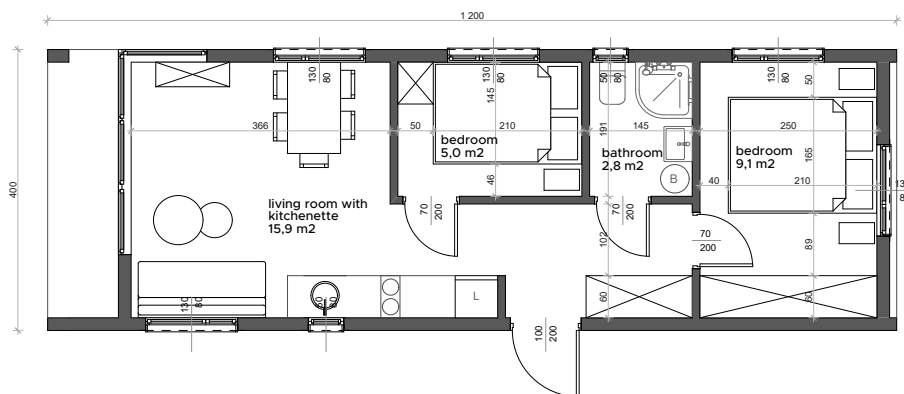
### DIFFERENT FACADE APPEARANCE



VELI houses are characterized by a modern architecture line, emphasized by the huge glazing of the gable wall and fashionable accents of finishing the facade.

The living room has an enlarged cubature, thanks to the opening of the ceiling up to the roof. Inside the living room there are transverse wooden beams that give it an elegant look. In some VELI models, we managed to incorporate a comfortable and covered by roof terrace, which can be easily enlarge. In models without a terrace, it is possible to add it comfortably, outside the outline of the house. Versions with a built-in terrace have an additional glass corner, emphasizing the modern look.

Meveline homes are fantastic alternatives to wooden and traditional homes. The homes are delivered pre-built and placed directly on the ground without a foundation. Because of the attachable wheels, they can be positioned almost anywhere. The home's mobility has a huge impact on the use as a temporary structure - after a while it can be placed elsewhere. Additionally, after placing the home at its permanent location you can mask the mobility function and aesthetically integrate it into the environment. VELI line is available in sizes 35m<sup>2</sup> and 48m<sup>2</sup>, in various variants of the interior layout and facade finishing.



# MOBILE HOME VELI 7

## STANDARD

**External dimensions:** 12x4 m

**Construction:** steel construction with wooden elements, OSB board, drawbar and two axles of demountable, non-steer wheels \*

**Outer wall:** OSB board, steel profile, PUR foam insulation, wooden slats, windproofing, Scandinavian spruce as standard, other materials for facade \*

Inner walls finished with MDF panels or wood \*

**Roof:** gable with an angle up to 400°, vapor barrier, OSB board, steel and wood profile, PUR foam insulation, wind insulation, formwork, standing seam steel roof panel, gutters and down pipes hidden behind the facade

**Floors:** coated steel sheets, steel profile, PUR foam insulation, OSB board, vinyl flooring for intensive use or laminated panels \*

**Partition walls:** OSB boards, steel or wooden profiles, acoustic insulation, finished with MDF panels or wood \*

**Ceiling:** minimum height 2.25m, raised in the living room with decorative beams, finished with MDF panel or wood \*

**Window:** 5 chambers with one-sided veneer in color, micro ventilation function, sliding balcony window or with a movable post

**Doors:** outer steel and in color, insulated; internal MDF white

**Electrical installation:** distribution box, wires in a conduit – 3x2,5 mm and 3x1,5 mm, sockets, contacts, external socket, dimmer in living room

**Water and sewage installation:** electrically heated, anti-freeze, PEX-AL-PEX pipes sewerage from PVC

**Lightning:** ceiling LED inside, sconce and LED strip outside

Heating: installation ready for electric-oil heaters or radiant heaters

**Bathroom:** prepared for Package I, i.e.: installation of standard and additional fittings, floor finished with a vinyl lining, walls and ceiling of OSB board with vapor barrier

**Kitchen:** prepared for the assembly of standard fittings and additional, as well as furniture

**Living room, bedroom:** fully prepared for furniture and fixing of radiators; walls and floors finished, internal doors mounted.



## ADDITIONAL PACKAGES

### Package I - Turnkey bathroom

Bathroom: walls and ceiling made of resistant vinyl panel, vinyl floor, 80cm half-round corner cabin, compact or hanging toilet\*, washbasin with wall cabinet, wall cabinet with mirror, towel dryer, electric fan, installation for washing machine, 50l boiler or flow heater \*

### Package II - Turnkey kitchen, standard furniture, electric heaters.

Kitchen: lower and upper cabinets, countertop with countertop socket, undercounter fridge, absorber, 2-burner electric hob, one-bowl sink with battery, installation for dishwasher

Living room: fold-out sofa with sleeping function, coffee table, wardrobe, shelves

Bedroom: 2-person bed, wardrobe, shelves, optional - bunk bed for 2 or 3 persons

**Custom assembly** – possible assembly and installation of furniture and equipment from entrusted material

**Examples of additional:** façade made of non-wood panels, finishing of internal walls in bleached, oiled or painted wood, wooden floor, air conditioning with heating function, underfloor heating, hanging Infra-red heaters, system terrace, "super winter" package, individual projects

### Option:

- The home is also available in a simplified, summer version
- There is a possibility of mirror or individual layout
- Two ways to finish the facade are possible

\* Optional equipment