



MOBILE HOME SEVA 5

12 x 4 m | 48 m²

- All-year-round, delivered complete
- Ready to live immediately after delivery
- Also available in simplified, summer version
- For 6 people - 2 bedrooms, living room with pullout couch, kitchenette and bathroom
- Solid reinforced steel construction
- Complete plumbing and electrical installation
- Facade from Scandinavian spruce or other materials
- Internal walls finished with modern materials or wood *
- Turn key packages *
- Compact terrace and pergola *

* Optional equipment



Meveline homes are fantastic alternatives to wooden and traditional homes. The homes are delivered pre-built and placed directly on the ground without a foundation. Because of the attachable wheels, they can be positioned anywhere. The home's mobility has a huge impact on the use as a temporary structure. Additionally, after placing the home at its permanent location you can mask the mobility function and aesthetically integrate it into the environment.

Meveline homes are characterized by their stylish design. In the building process we use modern construction and finishing materials. Homes are available in 24m² up to 48m² sizes. Clients can pick the facade, interior finishes, and many additional elements.

VARIOUS MATERIALS
AND FACADE COLOURS



DIFFERENT FACADE APPEARANCE



standard

option

MOBILE HOME SEVA 5

STANDARD

External dimensions: 12x4 m

Construction: steel construction with wooden elements, OSB board, drawbar and two axles of non-steer wheels *

Outer wall: OSB board, steel profile, PUR foam insulation, wooden slats, windproofing, Scandinavian spruce as standard, other materials for facade *

Inner walls finished with MDF panels or wood *

Roof: gable, vapor barrier, OSB board, steel and wood profile, PUR foam insulation, wind insulation, formwork, standing seam steel roof panel, hidden gutters and down pipes

Floors: coated steel sheets, steel profile, PUR foam insulation, OSB board, vinyl flooring for intensive use or laminated panels

Partition walls: OSB boards, steel or wooden profiles, acoustic insulation, finished with MDF panels or wood *

Ceiling: height 2,25m-2,55m (living room elevated as standard) finished with MDF panels

Windows: 5 chambers with one-sided veneer in color, ventilation function in selected windows, balcony window with movable post

Doors: outer steel in color, insulated; internal MDF white

Electrical installation: distribution box, wires in a conduit - 3x2,5 mm and 3x1,5 mm, sockets, contacts, external socket, dimmer in living room

Water and sewage installation: electrically heated, anti freeze, PEX-AL-PEX pipes, sewerage from PVC

Lightning: ceiling LED inside, scone and LED strip outside

Heating: installation ready for electric-oil heaters

Bathroom: prepared for the installation of standard fittings and additional, ceiling finished with a vinyl panel, vinyl carpet flooring and walls of OSB board with vapor barrier

Kitchen: prepared for the assembly of standard fittings and additional, as well as furniture

Living room, bedroom: fully prepared for furniture and fixing of radiators; walls and floors finished, internal doors mounted.

* Optional equipment

ADDITIONAL PACKAGES

Package I - Turnkey bathroom

Bathroom: vinyl walls and ceiling, semi-circular corner shower cabin, compact toilet, washbasin with standing cabinet, hanging cabinet with mirror, towel heater, electric fan, 30/50 l boiler, hookup for the washing machine

Package II - Turnkey kitchen plus electric heaters and furnishings

Kitchen: Walls – lower and upper cabinets, countertop, under-counter fridge, absorber, 2 burner electric cook top, one-compartment sink, installation for the dishwasher

Living room: fold out sleeper sofa, table, wardrobe or shelves

Bedroom: double bed, wardrobe, optional - shelves, bunk bed for 2 or 3 people

Examples of additional equipment: facade of Kerrafront panels, interior wall finish whitewashed or oiled wood, wooden floor, air conditioning, floor heating, modular terrace with pergola, roofed pergola, "super winter" package, individual projects.

Options:

- The home is also available in a simplified, summer version
- There is a possibility of mirror or individual layout

SEVA 5 model is available in 2 variants of interior layout

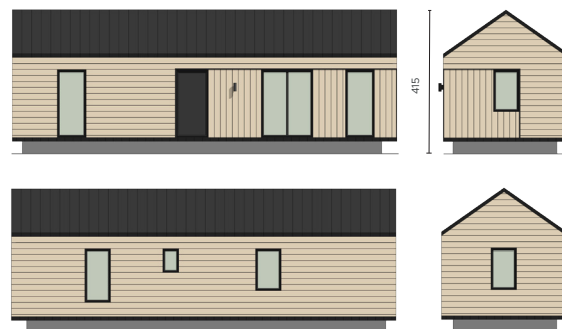
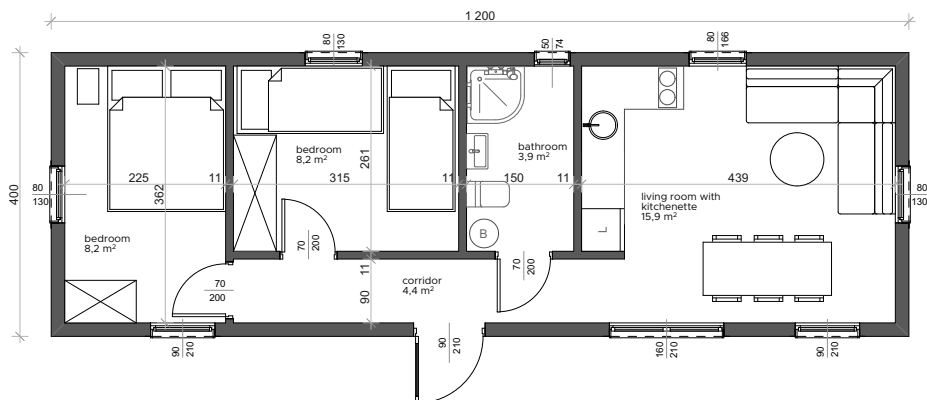
VARIANT 1



VARIANT 2



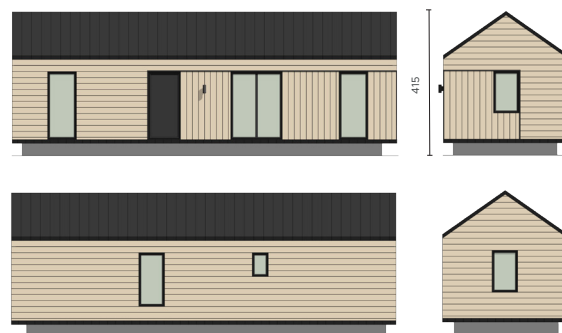
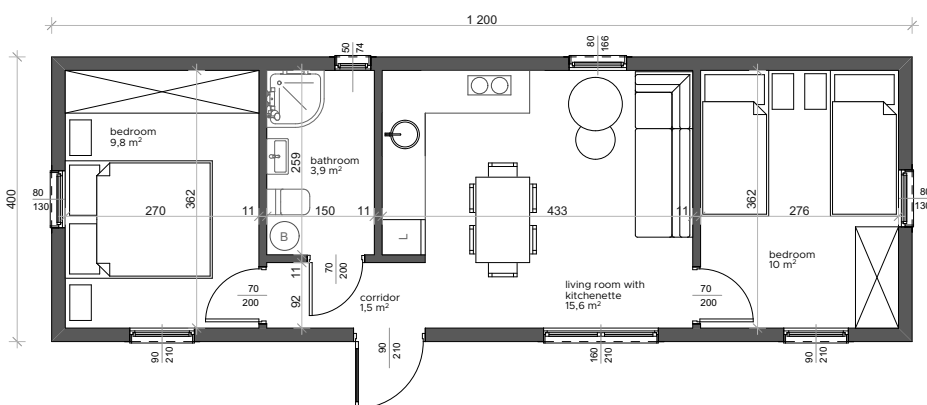
VARIANT 1



Sample interior layout
* mirror layout or individual project available



VARIANT 2



Sample interior layout
* mirror layout or individual project available

